

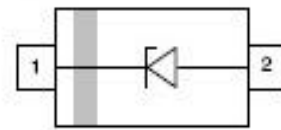
Features

- For surface mounted applications in order to optimize board space
- Wide zener voltage range selection : 5.1V
- High reliability
- Pb free version and RoHS compliant
- Component in accordance to RoHS 2002/95/EC and WEEE 2002/96/EC



Mechanical Date

- Case: JEDEC SOD-323 molded plasticbody over chip
- Terminals: Solder plated, solderable per MIL-STD-750 Method 2026
- Moisture Sensitivity: Level 1 per J-STD-020
- Polarity: types the band by laser denotes the cathode
- Weight: 0.0063gram



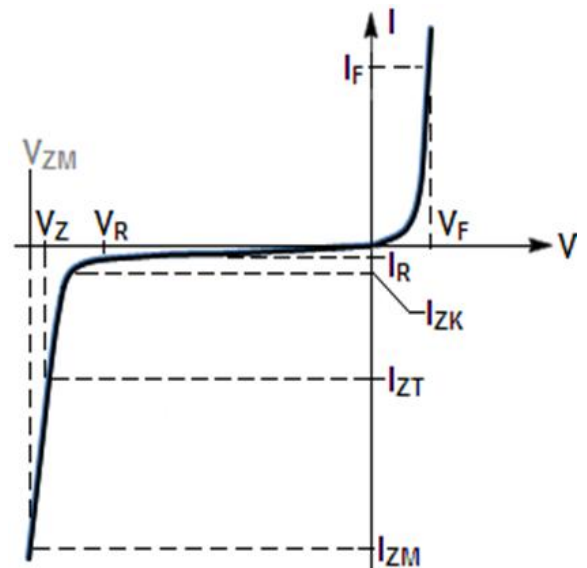
SOD-323

Maximum Ratings & Thermal Characteristics (T_A = 25 °C unless otherwise noted)

Items	Symbol	Value	Unit
Power dissipation	P _D	500	mW
Typical thermal resistance, junction to ambient ⁽¹⁾	R _{θJA}	625	°C / W
Junction temperature	T _J	150	°C
Storage temperature range	T _{STG}	-55 to +150	°C

Electrical Characteristics

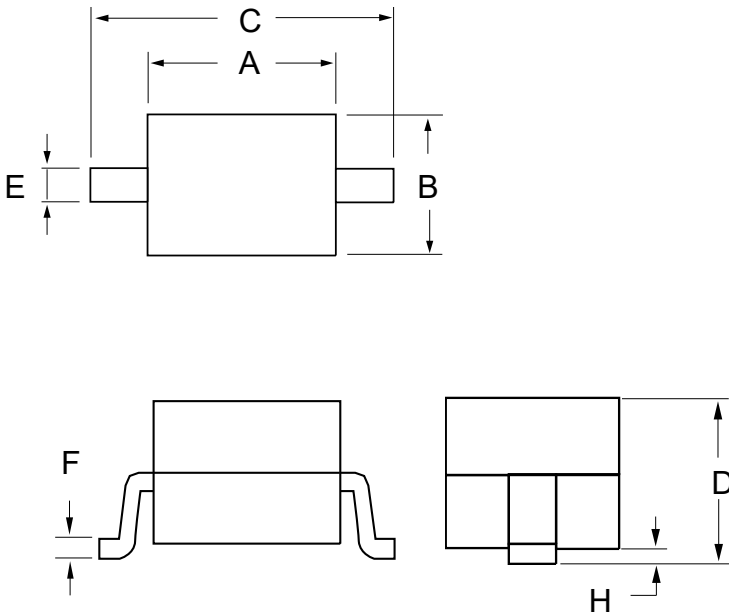
Symbol	Parameter
V _Z	Reverse Zener Voltage @ I _{ZT}
I _{ZT}	Zener (DC)current at specified test point
Z _{ZT}	Maximum Zener Impedance @ I _{ZT}
I _{ZK}	Zener (DC)current near breakdown knee
Z _{ZK}	Maximum Zener Impedance @ I _{ZK}
I _{ZM}	Maximum Zener current
V _{ZM}	Maximum Zener voltage
P _D	Maximum steady-state power dissipation(=I _{ZM} ×V _{ZM})
I _R	Reverse Leakage Current @ V _R
V _R	Reverse Voltage
I _F	Forward Current
V _F	Forward Voltage @ I _F



Electrical Characteristics ($T_A = 25^\circ\text{C}$ unless otherwise noted, $V_F = 0.9\text{ V Max. @ } I_F = 10\text{ mA}$ for all types)

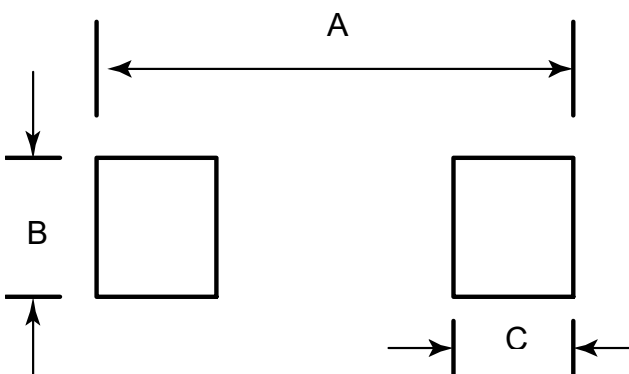
DEVICE	Marking Code	Zener Voltage			Zener Impedance			Leakage Current		
		$V_Z(\text{Volts})$			$@I_{ZT}$	$Z_{ZT}@I_{ZT}$	$Z_{ZK}@I_{ZK}$		$I_R@V_R$	
		Min	Nom	Max	mA	Ω	Ω	mA	μA	Volts
PZ04201D3	ZD	4.8	5.1		5	60	480	1	20	4.2

SOD-323 Package Outline Drawing



SYM	DIMENSIONS				
	MILLIMETERS			INCHES	
	MIN	NOM	MAX	MIN	MAX
A	1.50	1.65	1.80	0.060	0.071
B	1.20	1.30	1.40	0.045	0.054
C	2.30	2.50	2.70	0.090	0.107
D	-		1.10	-	0.043
E	0.30		0.40	0.012	0.016
F	0.10		0.25	0.004	0.010
H	-		0.10	-	0.004

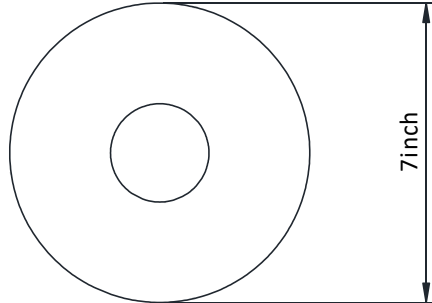
Suggested Land Pattern



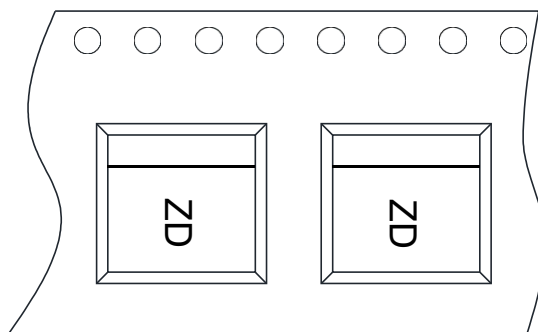
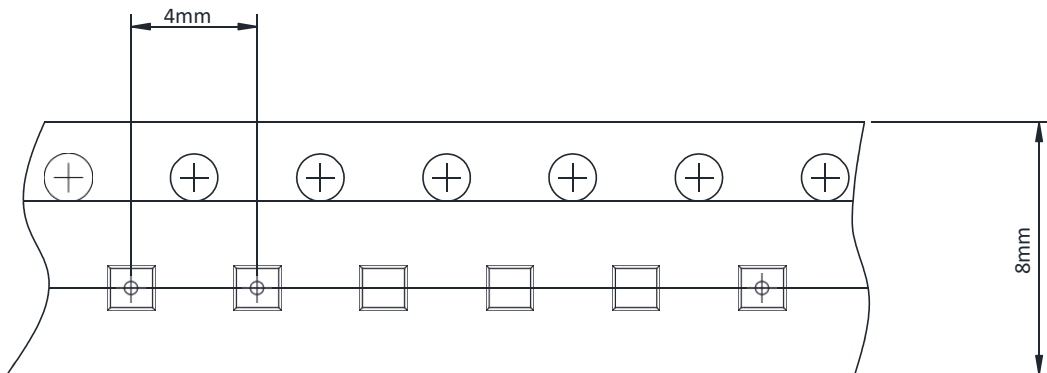
SYM	DIMENSIONS	
	MILLIMETERS	INCHES
A	3.15	0.120
B	0.80	0.031
C	0.80	0.031

TAPE AND REEL INFORMATION

Reel Dimensions



Tape Dimensions



User Direction of Feed